

CITIZEN

Fast, easy and reliable

High speed printing with unique ease of use



CT-S801II
(available in black or white)

LCD display

The industry's first POS printer with LCD display for easy configuration and operation. Many set up options and coloured status or error messages.

In a hurry?

With 300mm/sec. print speed the CT-S801II is the fastest POS printer in the market.

Toolfree maintenance

Paper jam? No problem for the CT-S801II. One hand grip and the cutter is released automatically. No tool is needed. Even if the long-life cutter ever needs to be exchanged. Thanks to its Snap-In design this only takes 30 seconds.

Internal Power Supply

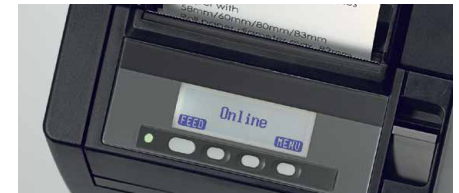
The CT-S801II POS printer from Citizen offers an internal power supply.

CITIZEN CT-S801II

POS

Applications

- Receipt
- Coupon
- Ticket
- Daily Report
- Kitchen
- Delivery slip
- Barcode
- Weigh scales
- Kiosk
- Queue management



Online status



Error message with instruction



Snap-in cutter

CITIZEN

Specifications

Model	CT-S801II	
Printing method	Line thermal dot printing	
Printing width	280mm/640 dots, 72mm/576 dots, 64mm/512 dots, 54.5mm/436 dots, 54mm/432 dots, 52.5mm/420 dots, 48mm/384 dots, 45mm/360 dots, 48.75mm/390 dots, 68.25mm/546 dots	
Dot pitch	8 x 8 dots/mm (203 dpi)	
Printing speed	Max. 300mm/s (print density 100%), 2400 dot-lines/s	
Number of columns	83mm paper: Font A – 53, Font B – 71, Font C – 80, 80mm paper: Font A – 48, Font B – 64, Font C – 72, 60mm paper: Font A – 36, Font B – 48, Font C – 54, 58mm paper: Font A – 35, Font B – 46, Font C – 52	
Character size	Font A: 1.50 x 3.00mm (12 x 24 dots), Font B: 1.13 x 2.13mm (9 x 17 dots), Font C: 1.00 x 2.00mm (8 x 16 dots)	
Character table	Alphanumeric, international, PC437/850/852/857/858/860/863/864/865/866/WPC1252/katakana/Thai code 18	
Barcode type	UPC-A/E, JAN-13/8, Code 39, Code 128, CODABAR, Code 93, PDF417, QR Code	
Logo registration/print	384 KB (capable of storing user-defined characters and logos)	
Line spacing	4.23mm (1/6 inch), can be set by command	
Paper	Width	83mm/80mm/60mm/58mm (all +/-1mm)
	Diameter	maximum 83mm
	Thickness	65-75µm (core tube diameter: inner 12mm/outer 18mm) 75-150µm (core tube diameter: inner 25.4mm/outer 32mm)
	Recommended Paper	TF-50KS-E-2D from Nippon Paper, PD150R or PD160R from Ohji Paper, PA220AG, HP220A, HP220AB-1, F230AA, P220AB, or PB670 (2-color paper) from Mitsubishi Paper
Interface	Serial (RS-232C compliant), parallel (IEEE 1284 compliant)), USB, USB with hub, Ethernet, Wireless LAN (Wifi), powered USB, Bluetooth	
Input buffer	4K bytes/45 bytes	
Drawer kick-out	2 drawers	
External device port	RJ-45, 8-pin connector	
Liquid crystal display (LCD)	128 x 32 dots STN liquid crystal, white/red LED backlight	
Power supply	Input: AC 100 to 240V, 50/60 Hz, 150 VA, Output: DC 24, 2.1 A	
Weight	CT-S801IIS: Approx. 2 kg, CT-S801IIA: Approx. 1.6 kg	
Dimensions (W x D x H)	CT-S801IIS: 145 x 192 x 148 mm, CT-S801IIA: 145 (W) x 192 (D) x 120 (H) mm	
Operating environment	5 to 45°C, 10 to 90% RH (no condensation)	
Storage environment	-20 to 60°C, 10 to 90% RH (no condensation)	
Reliability	Print head life: 150km, 200 million pulses (at normal temperature and humidity using recommended paper), Auto cutter life: 2 million cuts (at normal temperature/humidity, using recommended paper and paper thickness)	
EMC and safety standards	UL, C-UL, FCC Class A, TUV-Bauart, CE Marking, VCCI, CCC, BIS	
Warranty	2 years for Printer	

All product names are trademarks of the respective manufacturers. Epson® and ESC/POS™ are trademarks or registered trademarks of Seiko Epson Corporation. Designs, specifications and availability are subject to change without notice. Errors and omissions excluded.

Type Classification

CT-S801IIS 3 RS E BK P L M1
1) 2) 3) 4) 5) 6) 7) 8) 9)

1) Model type

CT-S801II

2) Power supply

DC: No power source
S: Built-in power supply type
A: AC adapter type

3) Paper width

3: 3 inch (80/83 mm)
2: 2 inch (58/60 mm)

4) Interface

PA: Parallel
RS: Serial RS-232C
UB: USB only
UH: USB with hub

5) Market:

J: Japanese
E: Europe/Asia
U: North America
C: China

6) Body case color

WH: White
BK: Black
GR: Gray

7) PNE sensor

No
P: PNE sensor

8) Label

No
L: Label type

9) Black Mark sensor

No
M1: Left side
M2: Right side

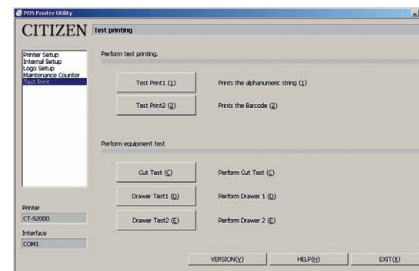
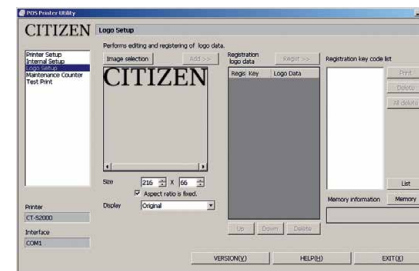
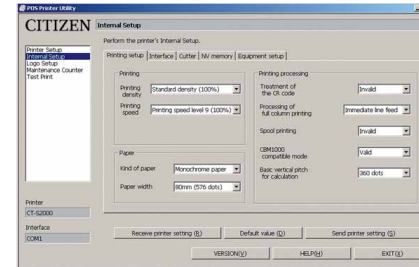
Accessories/ Interface Connections

- Serial IF1-RS01
- Parallel IF1-PA01
- USB IF1-UB01
- Powered USB IF1-PU01
- USB incl. USB hub IF1-HU01
- Ethernet (Standard) IF1-ET01



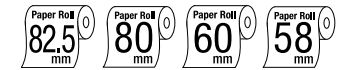
Exchangeable interfaces plus RJ-45 port

Customization Software



CITIZEN CT-S801II

POS



Features & Benefits

- 300mm / sec high-speed printing
- 82,5/80/60/58 mm selectable paper width
- Easy paper loading
- Auto retracting Cutter (full/partial)
- Snap-in cutter
- LCD display
- Built-in buzzer
- Top paper exit
- Paper roll capacity Ø 83mm
- Exchangeable interface cards
- RJ-45 port
- Built-in AC adaptor
- Cash drawer kick-out
- Bitmap registration (NV memory)
- Barcode printing
- ESC/POS compatibility
- Page mode
- Two color printing
- Smoothing fonts
- Available in white, black or dark grey (option)
- Driver: Win2000/XP/Vista/2003 Server, OPOS, Java POS, CUPS
- Utility software: Printer customization software, Receipt Layout Designer